

Thank you for your purchase

File name:

Cartoon Effects Photoshop Action

Features:

- One ATN File + One ABR File + Help File
- One Click to Apply an Amazing Effect
- RGB Color Mode
- Work with any Resolution Photo
- Adobe Photoshop CC
- Very premium looking
- Fully Layered
- Available Color variation
- The Image are only for presentation. Images can be found from <https://freepik.com>

Included Files:

- ATN File.
- ABR File.
- Help File.

My Working Software Version: CC 2018 English Version.

Software supported version: CC, CC2015.5, CC2017, CC2018+ English Version.

Note: Recommended photo size 3500 pixels for better result

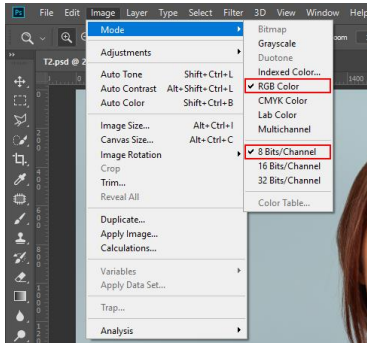
Note: Recommended photo resolution 300 dpi.

Note: Make sure you are using the ENGLISH version of Photoshop if not so see this video

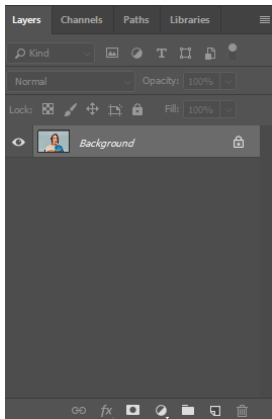
you can always change it to English and then back again to your native language using >>

<https://www.youtube.com/watch?v=GJAiu5W2gLE>

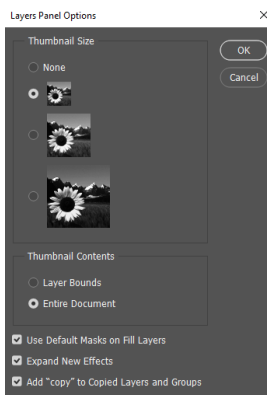
How to use action?



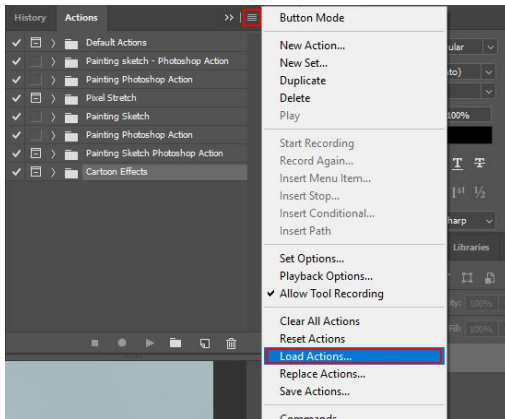
1. Open your image in Photoshop make sure your image is RGB color Mode if not
Go to: Image > Mode and check the "RGB color" and "8 Bits/Channel"



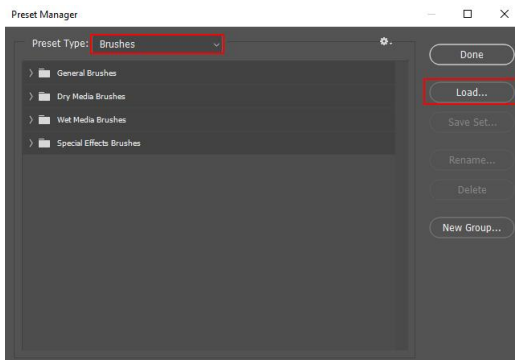
2. Make sure that your image is "Background layer"
Go to: Layer > new > Layer from background



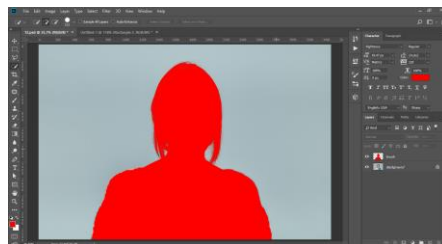
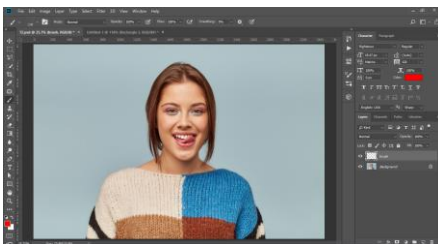
3. Click on menu icon at the right on "Layers" panel and go to "Panel Option" And check the
"Add "copy" to Copied Layers and Groups".



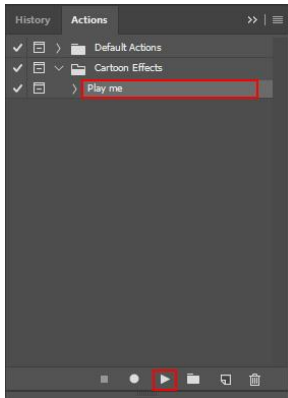
4. Load the action go to: Window > Actions, click on menu icon at the right and choose in List **Load Actions**, then find the action (Cartoon Effects Action) on your computer and open it.



5. Load brush "Brushes" file, go to: Edit > Presets > Preset Manager > Load Brush

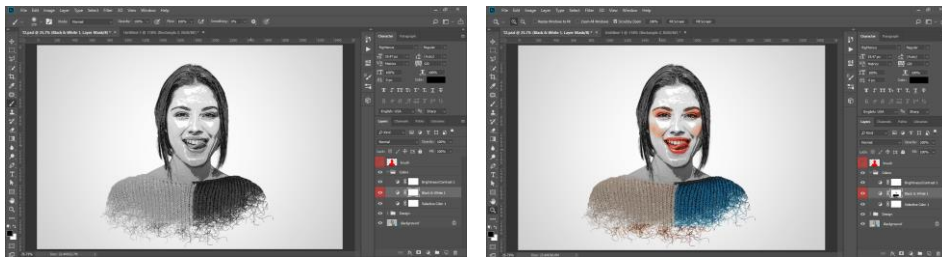


6. Create a new layer and name it "**brush**" make sure same my spelling, Paint on this layer area that you need to focus. (you can use any color)



8. Select action and play action.

9. Wait a few minutes, action now working.



10. Action working is done now you can brush the area for appearance color or hide the current layer (Black & White 1).

If you have any problem using the action, feel free to ask

My profile: <http://graphicriver.net/user/roobii>

Don't forget to rate. 😊

Best Regards,

Created by: **Roobii**